

SENTRY ALARM PANEL WITH ADVISOR

PEEL HERE

Installation Process:

All installations should be documented on apps.eone.com

1. Access apps.eone.com from any smart device
 - If you don't have access to a smart device, please contact your local distributor for direction
2. Log in or create a login
3. Find or create a new site (customer address)
4. Complete Installation Checklist

See installation manual, shipped with your Grinder Pump Station, for complete instructions

Panel Installation Notes:

- The panel is recommended to be installed within sight of the station
- The panel must be installed where an alarm can be seen and heard
- The panel is to be mounted to a wall or pole through mounting flanges at top and bottom of panel
- The panel must be mounted with the Alarm Lamp up
- All field penetrations for conduit entries must be through the bottom wall
- All conduit fittings into the panel must be 4X rated and sealed
- Seal all conduit using only Duct Seal, per NEC SECTION 300.5 & 300.7
- A dedicated 30 Amp breaker is required to feed the E/One Alarm Panel
- The conductors feeding the Main Source Power must be 10AWG copper or larger, per NEC 310.16
- The panel should be installed 3' to 5' off the ground

Supply cable Notes:

- Unprotected supply cable must be buried a minimum of 24" below grade or it must be protected by appropriate conduit, per NEC 300.5
- If using conduit, be sure to use proper bedding materials
- Supply Cable Voltage Drop – 12 AWG Wire
240 VAC Pump - .098 Volts per foot of cable
- The maximum recommended length of 12 AWG supply cable, assuming supply voltage is within 5% of pump nameplate voltage at panel:
240 VAC = 150' (minimum voltage at pump is 216 VAC)
- Consult your local distributor if longer distances are needed
Underground splices are not recommended and may void warranty

Pre-Startup Procedure:

1. Inspect the station for burial depth, grading, damage, electrical connections, etc.
2. Verify that the panel is wired properly (see the following pages), and is damage-free
3. Verify that the conduits are sealed with Duct Seal, and that there are no exposed wires outside the panel
4. Verify that the incoming voltage is between 216V and 264V

Startup Process:

All startups should be performed and logged on apps.eone.com

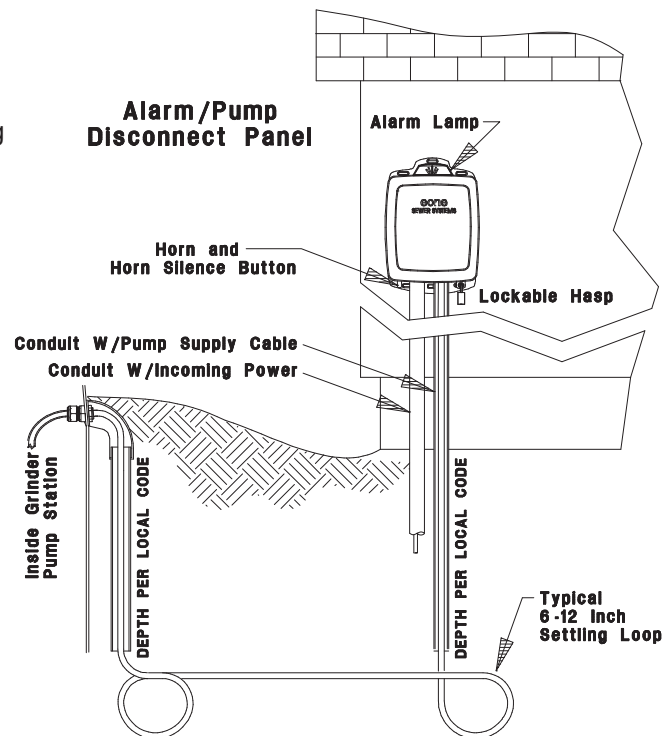
1. Access apps.eone.com from any smart device
 - If you don't have access to a smart device, contact your local distributor for direction
2. Log in or create a login
3. Find or create a new site (customer address)
4. Complete Startup Checklist

FOLLOW YOUR LOCAL AND NATIONAL CODES
WHEN INSTALLING THIS PRODUCT

e one
SEWER SYSTEMS

ENVIRONMENT ONE
2773 BALLTOWN ROAD
NISKAYUNA, NY, USA 12309

WWW.EONE.COM



Refer to nameplate for panel part number

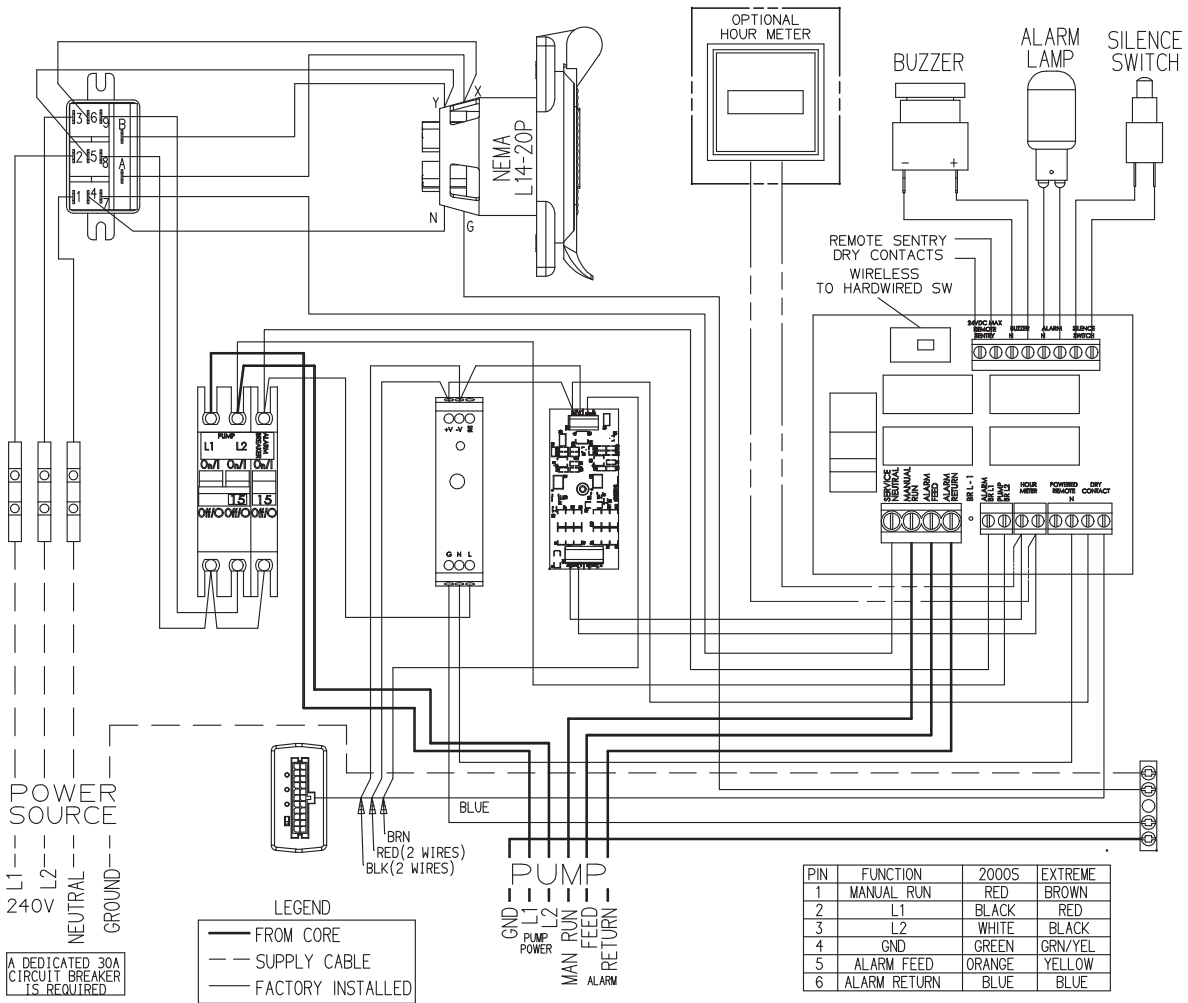
SERVICELINK Toll Free: 1-866-539-9803

DECAL NO.: NB0289P01 REV C

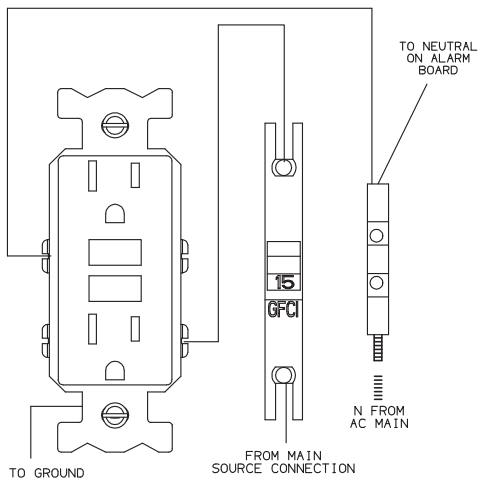
OPTIONAL WIRING DIAGRAMS

REFER TO FACING PAGE FOR MAIN WIRING

240 VOLT INPUT ON 2 POLE POWER WITH ADVISOR

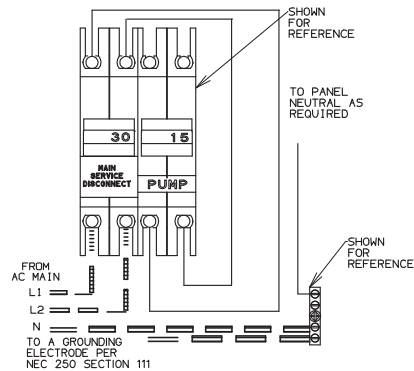


OPTIONAL GROUND FAULT RECEPTACLE



OPTIONAL MAIN SERVICE DISCONNECT

SERVICE DISCONNECT CONSTRUCTOR MUST COMPLY WITH NEC 70. CONDUCTOR MUST BE IN APPROVED CONDUIT WITH A MINIMUM WIRE SIZE OF 10GA COPPER



THIS PANEL IS SUITABLE FOR USE AS SERVICE EQUIPMENT WHEN A FACTORY INSTALLED MAIN SERVICE DISCONNECT BREAKER IS PRESENT

MAIN WIRING DIAGRAM

REFER TO FACING PAGE
FOR OPTIONAL FEATURE WIRING
240V Input on 2 Pole Power
WITH ADVISOR

